



STL30S45N

主要参数 MAIN CHARACTERISTICS

$I_{F(AV)}$	30A
V_{RRM}	45 V
T_{Jmax}	200 °C
IFSM	400 A
$V_{F(max)@20A}$	0.46V (@ $T_j=125^\circ\text{C}$)

用途

- 低压、高频整流
- 低压续流电路和保护电路
- 太阳能电池接线盒旁路二极管

APPLICATIONS

- Low voltage, high frequency rectifier
- Freewheeling circuit and protection circuit of low voltage
- solar cell junction box as a bypass diode

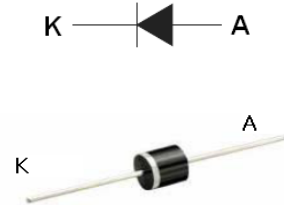
产品特性

- 低功耗，高效率
- 良好的高温特性
- 高可靠性
- 环保 (RoHS) 产品

FEATURES

- Low power loss, high efficiency
- High Operating Junction Temperature
- High reliability
- RoHS product

封装 Package



R-6-E1/R-6-S1

订货信息 ORDER MESSAGE

订货型号 Order codes			印记 Marking	封装 Package
有卤-条管 Halogen-Tube	有卤-编带 Halogen-Braid	有卤-散装 Halogen-Bulk		
N/A	STL30S45N-DR-A	STL30S45N-DR-F	STL30S45N	R-6-E1
N/A	STL30S45N-DE-A	STL30S45N-DE-F	STL30S45N	R-6-S1



绝对最大额定值 ABSOLUTE RATINGS ($T_c=25^\circ\text{C}$)

项 目 Parameter	符 号 Symbol	数 值 Value	单 位 Unit
最大反向重复峰值电压 Repetitive peak reverse voltage	V_{RRM}	45	V
最大直流阻断电压 Maximum DC blocking voltage	V_{DC}	45	V
正向平均整流电流 Average Rectified Forward Current	$I_{F(AV)}$	30	A
正向峰值浪涌电流 Surge non repetitive forward current (额定负载 8.3ms 半正弦波) 8.3 ms single half-sine-wave	I_{FSM}	400	A
正向最高工作结温 Forward operating junction temperature	T_j	-55~200	$^\circ\text{C}$
工作结温和储存温度范围 Storage temperature range	T_{STG}	-55~+150	$^\circ\text{C}$

电特性 ELECTRICAL CHARACTERISTICS

项 目 Parameter	测试条件 Tests conditions		典型值 Value(typ)	最大值 Value(max)	单 位 Unit
I_R	$T_j = 25^\circ\text{C}$	$V_R = V_{RRM}$	35	500	μA
	$T_j = 125^\circ\text{C}$	$V_R = V_{RRM}$	23	50	mA
V_F	$T_j = 25^\circ\text{C}$	$I_F = 20\text{A}$	0.45	0.50	V
	$T_j = 25^\circ\text{C}$	$I_F = 30\text{A}$	0.47	0.55	
	$T_j = 125^\circ\text{C}$	$I_F = 20\text{A}$	0.36	0.46	

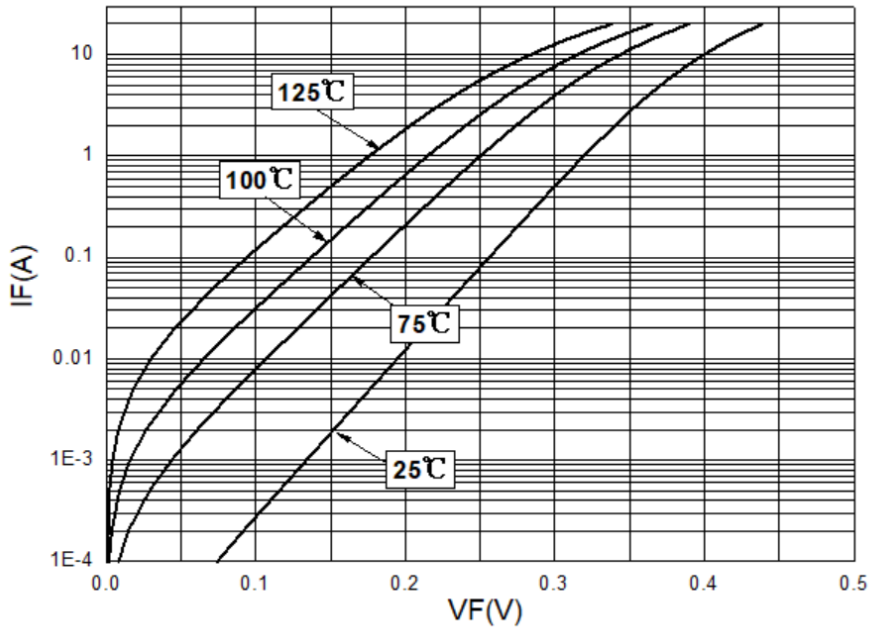
热特性 THERMAL CHARACTERISTICS

项 目 Parameter	符 号 Symbol	典型值 Typical	单 位 Unit
结到管壳的热阻 Thermal resistance from junction to case	$R_{th(j-c)}$	2.5	$^\circ\text{C}/\text{W}$

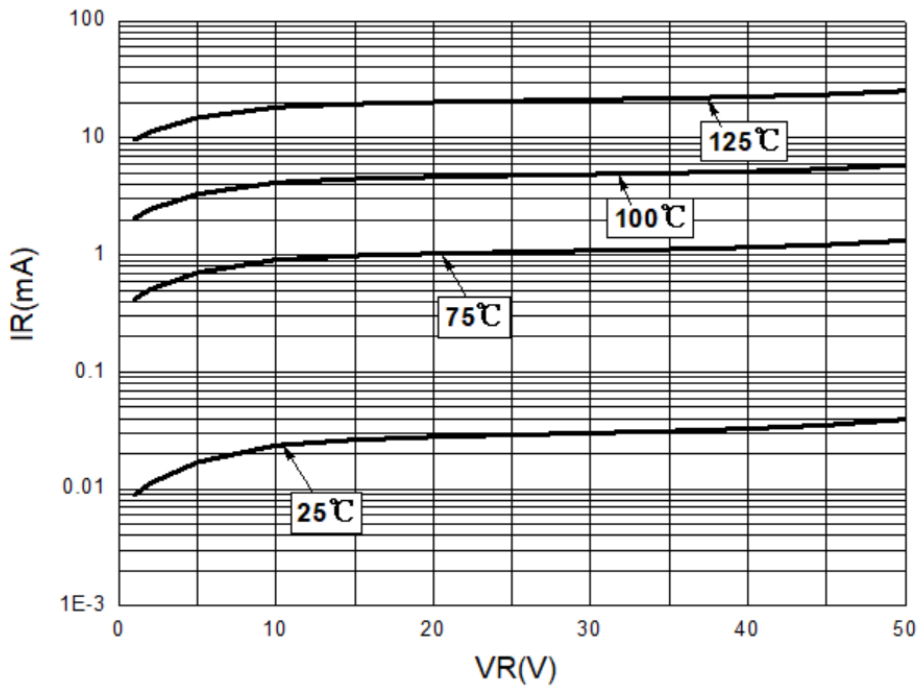


特征曲线 ELECTRICAL CHARACTERISTICS (curves)

I_F vs V_F



I_R vs V_R

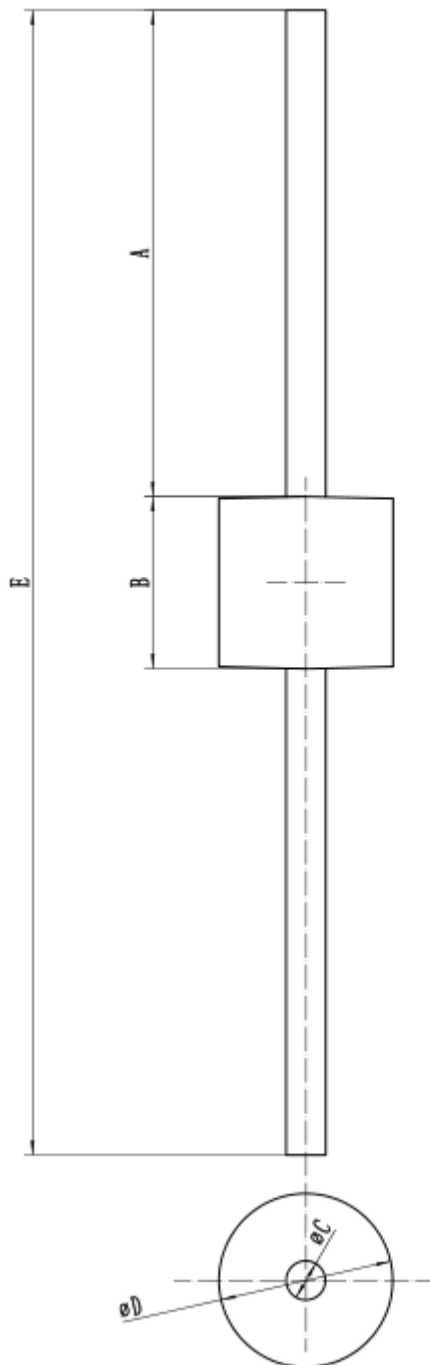




外形尺寸PACKAGE MECHANICAL DATA

R-6-E1

单位 Unit : mm



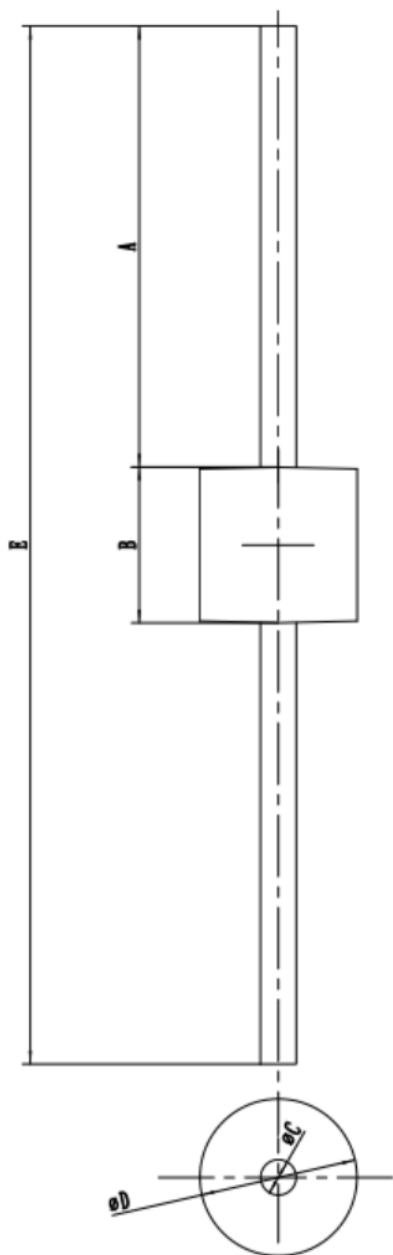
符号	Min	Max
symbol	mm	mm
A	23.6	25.6
B	8.5	9.1
C	1.8	2.1
D	8.5	9.1
E	55.7	60.3



外形尺寸PACKAGE MECHANICAL DATA

R-6-S1

单位 Unit : mm



符号	Min	Max
symbol	mm	mm
A	14.1	15.3
B	8.5	9.1
C	1.8	2.1
D	8.5	9.1
E	36.7	39.7



注意事项

1. 吉林华微电子股份有限公司的产品销售分为直销和销售代理，无论哪种方式，订货时请与公司核实。
2. 购买时请认清公司商标，如有疑问请与公司本部联系。
3. 在电路设计时请不要超过器件的绝对最大额定值，否则会影响整机的可靠性。
4. 本说明书如有版本变更不另外告知。

NOTE

1. Jilin Sino-microelectronics co., Ltd sales its product either through direct sales or sales agent , thus, for customers, when ordering , please check with our company.
2. We strongly recommend customers check carefully on the trademark when buying our product, if there is any question, please don't be hesitate to contact us.
3. Please do not exceed the absolute maximum ratings of the device when circuit designing.
4. Jilin Sino-microelectronics co., Ltd reserves the right to make changes in this. specification sheet and is subject to change without prior notice.

联系方式

吉林华微电子股份有限公司

公司地址：吉林省吉林市深圳街 99 号

邮编：132013

总机：86-432-64678411

传真：86-432-64665812

网址：www.hwdz.com.cn

CONTACT

JILIN SINO-MICROELECTRONICS CO., LTD.

ADD: No.99 Shenzhen Street, Jilin City, Jilin Province, China.

Post Code: 132013

Tel: 86-432-64678411

Fax: 86-432-64665812

Web Site: www.hwdz.com.cn